

## SPL Cell Imaging Guide

Confocal Dish & Plate  
Black Plate  
White Plate  
Cell Culture Slide I  
Cell Culture Slide II  
Cell Culture Slide Hybridwell™

# SPL Cell Imaging Guide

## Type of surface materials

### Glass

Optimized material to adhesive cells

### DLux

Modified plastic film for cell culture ability maximized through surface treatment  
 “A Low Level of Autofluorescence & High Level of Chemical Resistance”

### FLux

Very thin & modified plastic film for cell culture ability maximized by surface treatment  
 “The Excellent Level of Chemical Resistance & Durability / Appropriate to Confocal Microscopy”

### PS

Generally used for cell culture  
 “5 times thinner than Cell Cultureware”

## Cellular Imaging

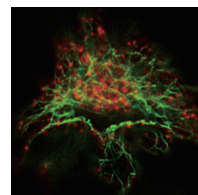
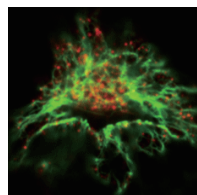
Available in optical and fluorescent microscopes

◆ Cell Cultureware	Cell Culture Flask Square Dish Erlenmeyer Flask	Cell Culture Flask Tray Plate Square Bottle	Cell Culture Flask Roller Bottle	Cell Culture Flask Bioreactor
◆ SPLCoat™	Collagen I Fibronectin	Collagen IV Matrix™	Poly-D-Lysine	Laminin
◆ Cellular Imaging	Black Plate Confocal Dish&Plate	White Plate Coverslip	Cell Culture Slide I Cell Culture Slide Hybridwell™	Cell Culture Slide II
◆ SPLInsert™	SPLInsert™ Hanging	SPLInsert™ Standing	Co Culture Dish(JLK)	Multi Insert Dish
◆ SPL3D™	3D Cell Culture Plate	Spheroid Forming Unit	Cell Floater	
◆ SPLPermea™	SPLPermea™ Bag	SPLPermea™ Rack	SPLPermea™ Dish	
◆ SPLScar™	SPLScar™ Scratcher	SPLScar™ Block		
◆ <i>In vitro</i> Fertilization	Cell Culture Plate 4well	IVF Culture Dish		

Available in confocal microscopes

### Advantages of SPL Cellular Imaging Products

- ✓ SPL offers a variety of specialized surface materials (Glass, DLux, FLux, PS)
- ✓ We provide cellular imaging products specialized to confocal microscopy



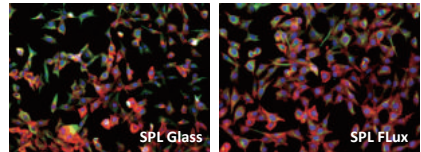
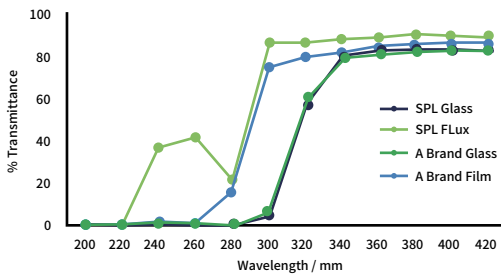
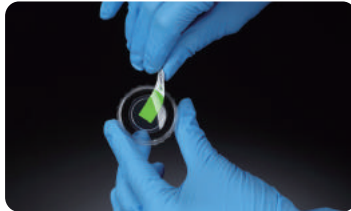
▲ General microscopy ▲ Confocal microscopy



# Confocal Dish & Plate

SPL Confocal Dish & Plates help researchers to acquire microscopic images with the high level of resolution through a glass or FLux attached to the center of dish & plate. They are useful applications performed at high magnification microscopic observation, inverted microscopy, fluorescence imaging living cells, confocal microscopy, phase contrast microscopy, micro-manipulation.

- ◆ Dish color: Clear/Black
- ◆ Dish size: 35 mm
- ◆ Plate size: 6well plate
- ◆ Hole size: 13Ø or 20Ø

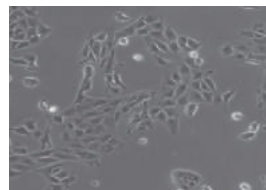


## The Purpose of Use

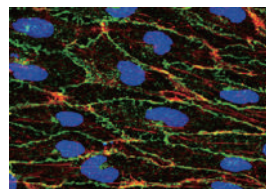
- ✓ Cell Culture + Fluorescence

## Features

- ✓ A Low Level of Auto-Fluorescence
  - ✓ High Cell Culture Rate
- ✓ Optimized for High-Scale Images



▲ General microscopy (100x) L-929



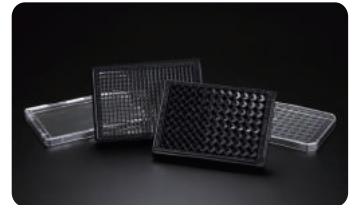
▲ Confocal microscopy HUVEC (Actin, E-cadherin)

# Black Plate



SPL Black Plate has low magnetic intensity, it enables to obtain accurate fluorescence experimental values. Moreover, its transparent bottom allows for researchers to do microscopic observation and fluoroscopy of cells, at the same time.

- ◆ Black Wall/Clear Bottom
- ◆ Surface Material: Glass/FLux/PS
- ◆ Designed to prevent cross contamination
- ◆ Effective gas exchange lid inner design
- ◆ Alphanumeric labeling
- ◆ Individual packaging in plastic tray (Cat.No. 33196/33296/332384/333384)

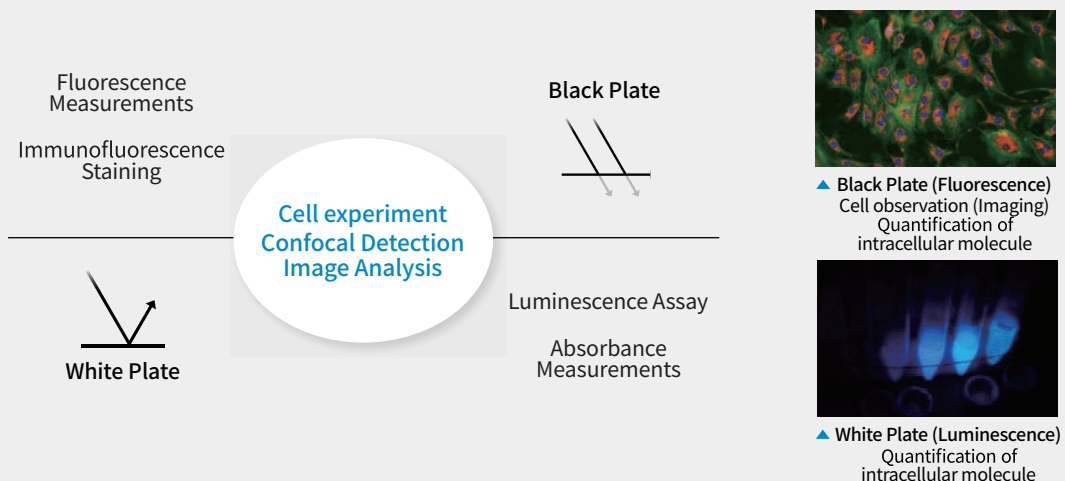


# White Plate



SPL White Plate are suitable for obtaining amplified signals from luminous experiments with high reflectivity and minimized interference between wells.

- ◆ White Wall/Clear Bottom
- ◆ Surface Material: Glass/FLux/PS
- ◆ Designed to prevent cross contamination
- ◆ Effective gas exchange lid inner design
- ◆ Alphanumeric labeling
- ◆ Individual packaging in plastic tray (Cat. No. 33496/33596)

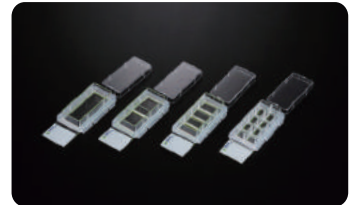


# Cell Culture Slide I & II



SPL Cell Culture Slide enables for researchers to carry out microscopic observation, various experiments using cells, viruses, toxicology and immunocytochemistry in one container. It enables cell proliferation and staining of cells without any cell movements or changes in containers. With the new materials for cell culture, DLux and FLux, you can have more choice.

- Convenient for microscopic observation
- Surface Material: Glass/DLux/FLux (no surface treatment for glass bottom)
- Easy open flip for chamber & slide disassembly
- No chemical adhesives used

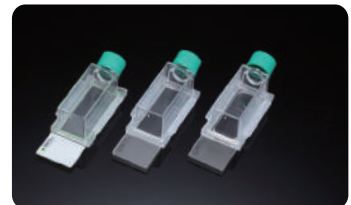


# Cell Culture Slide Hybridwell™

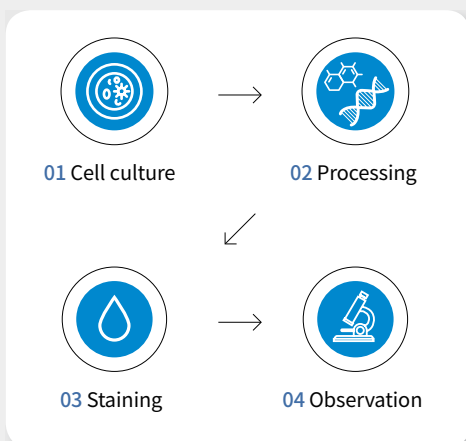


SPL Cell Culture Slide Hybridwell™ is a combination of conventional cell culture flask and single well slide, providing better and safer handling of samples.

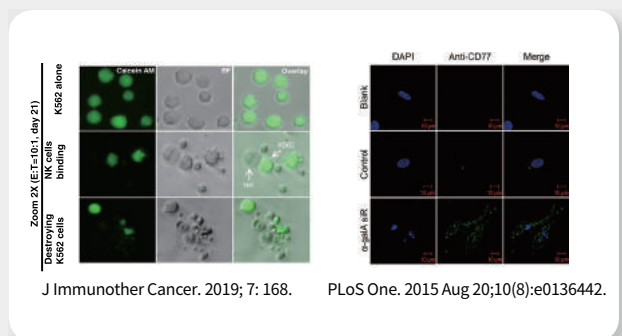
- Convenient for microscopic observation
- Chamber color: Clear
- Surface Material: Glass/DLux/FLux (no surface treatment for glass bottom)
- Easy open flip for chamber & slide disassembly
- No chemical adhesives used



## ▼ One-stop Solution



## ▼ Quoted paper





SPL Life Sciences Co., Ltd. [www.spllifesciences.com](http://www.spllifesciences.com)

26, Geumgang-ro 2047 beon-gil, Naechon-Myeon, Pocheon-si Gyeonggi-do 11192, Korea

Tel.+82-31-533-4800

Fax.+82-31-533-1430

